



BROWN EUROPE

Peeimoger

DC

Compact Geared Motors



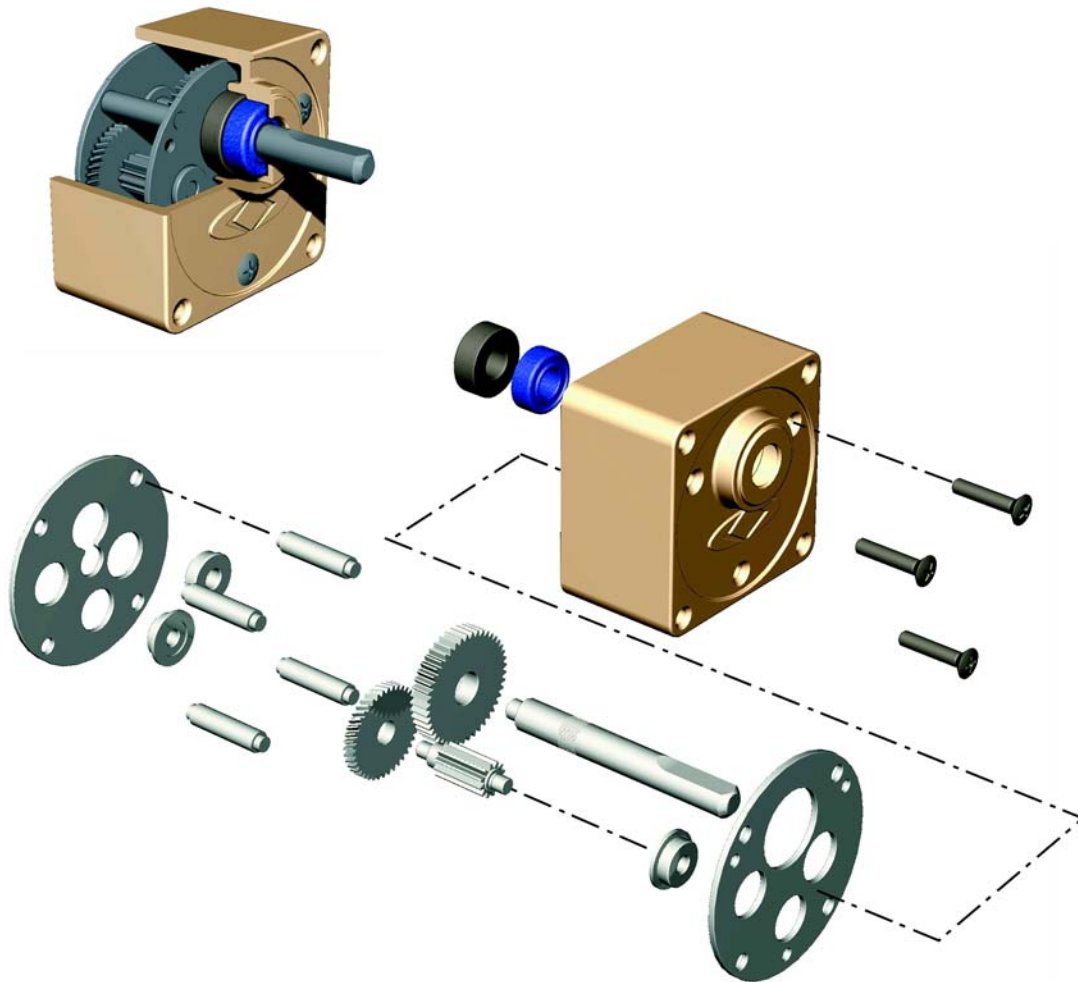
12v, 24v, 90v & 180v DC Motors & Gearboxes

6 Watts - 120 Watts Motor Power

Gearbox ratio's 3:1 - 1800:1

PEEIMOGER COMPACT D C GEARED MOTORS

GEARBOX CODING



<p>G - 2</p> <p>Gearhead Size</p> <p>2 - 60mm square 3 - 70mm square 4 - 80mm square</p>	<p>N</p> <p>Input Gear Shaft Type</p> <p>N - Helical Pinion Shaft U - Strengthened Helical Pinion Shaft</p>	<p>3 - K</p> <p>Gear Ratio :1</p> <p>3 3.6 5 6 7.5 9 10 12.5 15 18 20 25 30 36 50 60 75 90 100 120 150 180 200 250 300 360 500 600 750 900 1000 1200 1500 1800</p>	<p>H</p> <p>Type of Bearing</p> <p>K - Ball Bearing L - Oil impregnated Metal bearing</p>	<p>H</p> <p>Type of Gearhead</p> <p>H - Strengthened Gearhead</p>
--	--	--	--	--

Computer Integrated Design & Manufacture

Through CAD system simulation, gear matching tests, spectrum analysis and dynamometer testing confirm the quality of design and manufacture that have innovated the field of gear industry.

Designed to Customer Specification

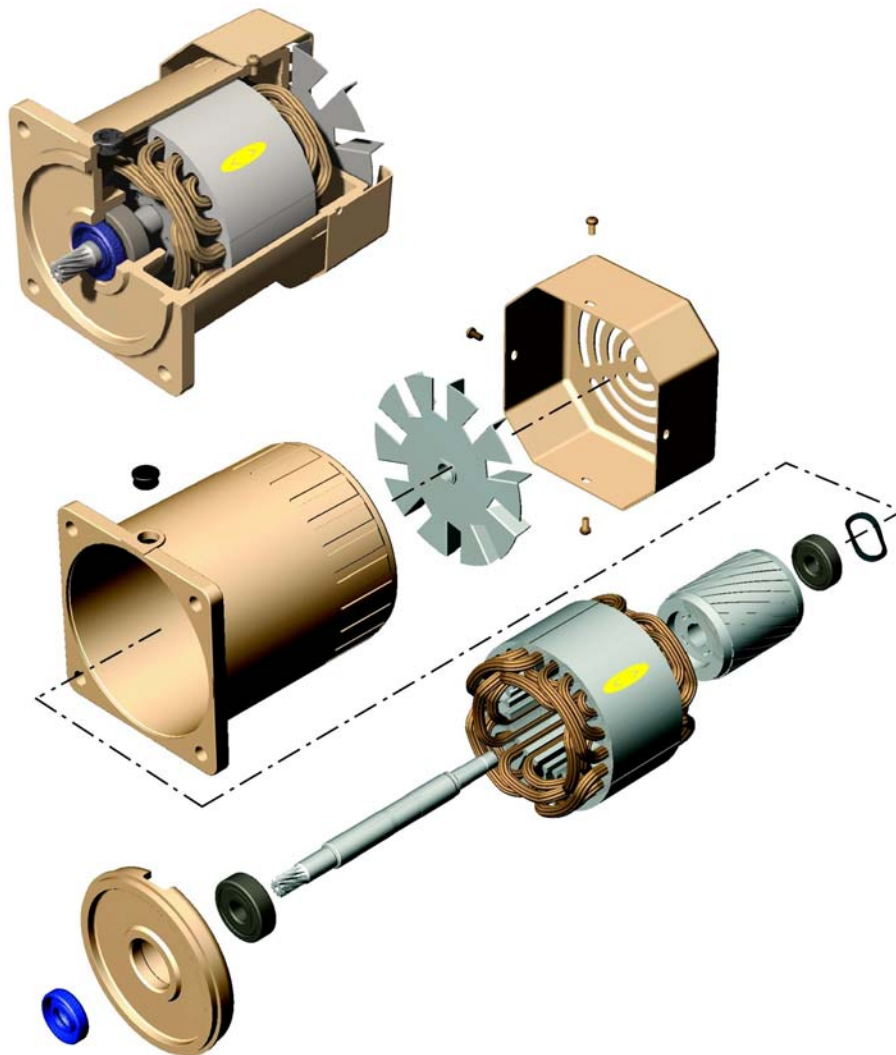
With our unique technology of design and manufacturing we are able to achieve not only standard products but also custom made products to meet customers demands.

Innovation

The brand new appearance and special patented designs within our product together with our commitment for precision and fast delivery should make us an excellent partner to work with.

PEEIMOGER COMPACT D C GEARED MOTORS

MOTOR CODING



M	-	2	D	K	6	N	-	E	18	S
Motor		Size	Type	Series	Power	Output Shaft Type		Supply Voltage	speed rpm	Accessory
		2 - 60mm square 3 - 70mm square 4 - 80mm square 5 - 90mm square	D - DC motor	K - K Series	6 - 6W 20 - 20W 30 - 30W 40 - 40W 65 - 65W 100 - 100W	A - Round shaft N - Helical Pinion Shaft U - Strengthened Helical Pinion Shaft		E - 12v F - 24v G - 90v H - 180v	18 - 1800 32 - 3200	B - Electromagnetic Brake S - Failsafe Brake C - Electromagnetic Clutch & Brake W - Worm Gearhead

Durable and Reliable

The motor shaft has an oil seal fitted which prevents the grease from the Gearhead entering the windings of the motor.

Energy Efficient

High efficiency and power saving are achieved by using high quality iron core and winding design within the motor.

Computer Integrated Design & Manufacturing

Through spectrum analysis, dynamometer testing systems and rotor quality control the quality of design and manufacturing have been boosted to the leading edge of motor technology.

PEEIMOGER COMPACT D C GEARED MOTORS

SELECTION

1800 rpm nominal no load speed (continuous rated)

Motor Power		6W	20W	30W	40W	65W			100W		
Voltage		12v	90v	12v	90v	12v			90v		
Motor full load speed		1700	1600	1500	1550	1550			1650		
Gearbox Type		G-2N.-K/L	G-3N.-K/L	G-4N.-K/L	G-5N.-K/L	G-5N.-K/L	G-5U.-K	G-5U.-KH	G-5U.-K	G-5U.-KH	
Nominal O/Speed	Ratio	Max Permissible Output Torque Nm									
600	3:1	0.07	0.31	0.43	0.61	0.67	0.86	-	1.5	-	
360	5:1	0.12	0.52	0.72	1.0	1.1	1.4	-	2.5	-	
240	7.5:1	0.18	0.78	1.1	1.5	1.6	2.6	-	3.7	-	
180	10:1	0.25	1.0	1.4	2.0	2.3	2.9	-	5.0	-	
140	12.5:1	0.31	1.3	1.8	2.5	2.8	3.6	-	6.2	-	
120	15:1	0.37	1.6	2.1	3.0	3.3	4.3	-	7.4	-	
90	20:1	0.50	2.1	2.9	4.0	4.5	5.7	-	9.9	-	
72	25:1	0.62	2.6	3.6	5.0	5.4	7.2	-	12.4	-	
60	30:1	0.74	3.1	4.3	6.0	6.5	8.6	-	14.9	-	
36	50:1	1.24	5	7.2	10	10	14.4	14.4	20	24.8	
24	75:1	1.86	5	8	10	10	20	21.6	20	30	
18	100:1	2.48	5	8	10	10	20	29	20	30	
12	150:1	2.5	5	8	10	10	20	30	20	30	
With 10:1 Gearhead fitted to the above											
9	200:1	2.5	5	8	10	10	20	30	20	30	
7.2	250:1	2.5	5	8	10	10	20	-	20	-	
6	300:1	2.5	5	8	10	10	20	-	20	-	
3.6	500:1	2.5	5	8	10	10	20	30	20	30	
2.4	750:1	2.5	5	8	10	10	20	30	20	30	
1.8	1000:1	2.5	5	8	10	10	20	30	20	30	
1.2	1500:1	2.5	5	8	10	10	20	30	20	30	

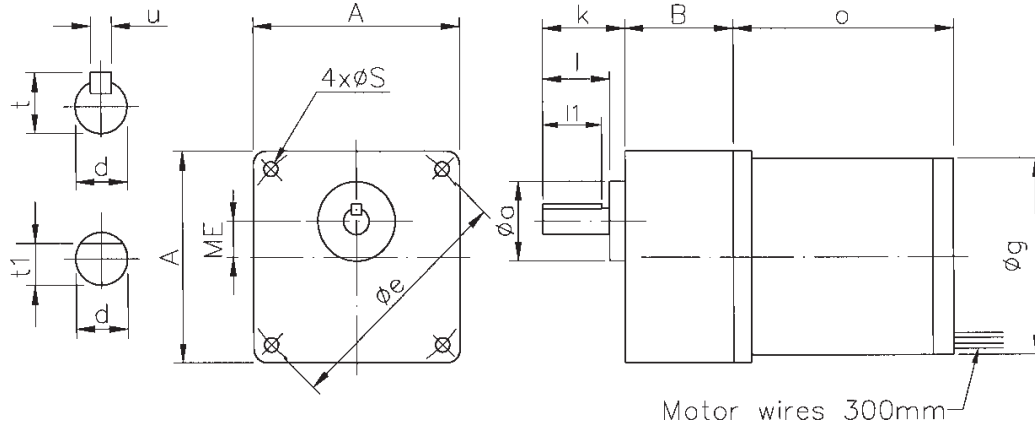
3200 rpm nominal no load speed (30 minute rated)

Motor Power		10W	36W	60W	70W	120W		200W		
Voltage		24v	180v	24v	180v	24v		180v		
Motor full load speed		2900	2700	2600	2600	2850		3200		
Gearbox type		G-2N.-K/L	G-3N.-K/L	G-4N.-K/L	G-5N.-K/L	G-5U.-K	G-5U.-KH	G-5U.-K	G-5U.-K	
Nominal O/Speed	Ratio	Max Permissible Output Torque Nm								
1066	3:1	0.08	0.42	0.5	0.55	0.84		1.5		
640	5:1	0.14	0.71	0.84	0.92	1.4		2.5		
426	7.5:1	0.21	1.1	1.26	1.38	2.1		3.7		
320	10:1	0.28	1.4	1.68	1.84	2.8		5.0		
256	12.5:1	0.36	1.8	2.1	2.3	3.5		6.2		
213	15:1	0.43	2.1	2.5	2.7	4.2		7.4		
128	25:1	0.72	3.5	4.2	4.6	7.0		12.4		
106	30:1	0.86	4.2	5.0	5.5	8.4		14.9		
64	50:1	1.44	5	8	9.2	14.0	14	20	30	
42	75:1	2.1	5	8	10	20	21	20	30	
32	100:1	2.5	5	8	10	20	28	20	30	
21	150:1	2.5	5	8	10	20	30	20	30	
With 10:1 Gearhead fitted to the above										
16	200:1	2.5	5	8	10	20	30	20	30	
12.8	250:1	2.5	5	8	10	20	-	20	-	
10	300:1	2.5	5	8	10	20	-	20	-	
6.4	500:1	2.5	5	8	10	20	30	20	30	
4.2	750:1	2.5	5	8	10	20	30	20	30	
3.2	1000:1	2.5	5	8	10	20	30	20	30	
2.1	1500:1	2.5	5	8	10	20	30	20	30	

PEEIMOGER COMPACT D C GEARED MOTORS

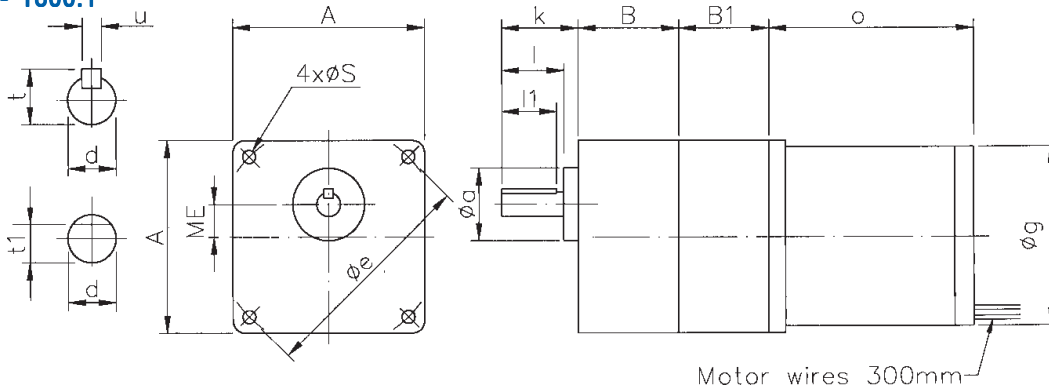
DIMENSIONS

G-2N to G-5N
RATIOS 3:1 - 180:1



Unit	Gearbox								DC Motor		Output Shaft				
	A	B	ME	a	e	k	s	g	o	dh7	l	l1	t	t1	u
Gearhead - Motor															
G-2N.K/L - M-2DK6 - E18	60	36	10	25	70	32	4.5	64	93	8	27	20	-	7	-
G-2N.K/L - M-2DK10 - F32	60	36	10	25	70	32	4.5	64	93	8	27	20	-	7	-
G-3N.K/L - M-3DK20 - G18	70	42	15	30	82	32	5.5	70	105	10	27	25	11.5	-	4
G-3N.K/L - M-3DK36 - H36	70	42	15	30	82	32	5.5	70	105	10	27	25	11.5	-	4
G-4N.K/L - M-4DK30 - E18	80	42	15	30	94	32	5.5	71	107.5	10	26	25	11.5	-	4
G-4N.K/L - M-4DK60 - F32	80	42	15	30	94	32	5.5	71	107.5	10	26	25	11.5	-	4
G-5N.K/L - M-5DK40 - G18	90	60	18	36.5	104	32	7	94	124	12	27	25	13.5	-	4
G-5N.K/L - M-5DK65 - E12	90	60	18	36.5	104	32	7	94	134	12	27	25	13.5	-	4
G-5N.K/L - M-5DK70 - H32	90	60	18	36.5	104	32	7	94	124	12	27	25	13.5	-	4
G-5N.K/L - M-5DK120 - F32	90	60	18	36.5	104	32	7	94	160	12	27	25	13.5	-	4

G-2N to G-5N
RATIOS 200:1 - 1800:1

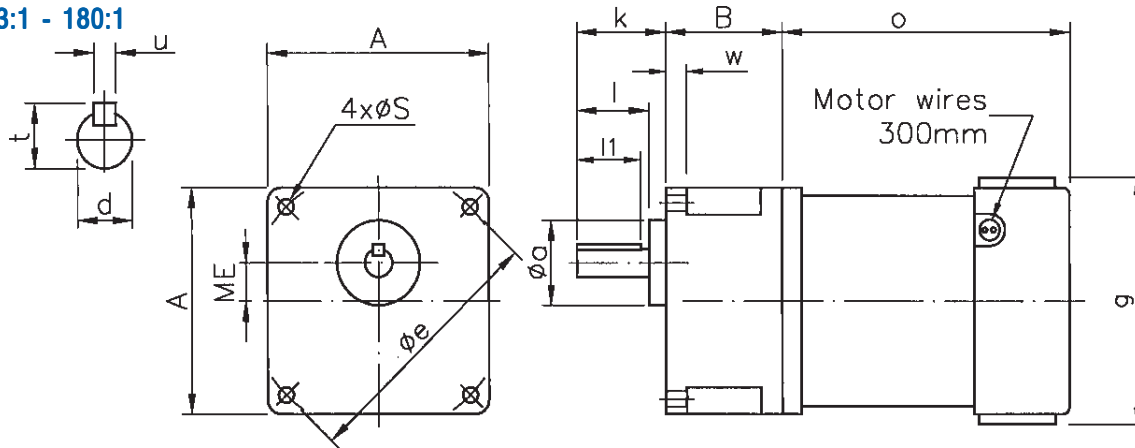


Unit	Gearbox										Output Shaft					
	A	B	B1	ME	a	e	k	s	g	o	dh7	l	l1	t	t1	u
Gearhead -Motor																
G-2N.K/L-10X -M-2DK6 - E18	60	36	22.5	10	25	70	32	4.5	64	93	8	27	20	-	7	-
G-2N.K/L-10X -M-2DK10 - F32	60	36	22.5	10	25	70	32	4.5	64	93	8	27	20	-	7	-
G-3N.K/L-10X -M-3DK20 - G18	70	42	26	15	30	82	32	5.5	70	105	10	27	25	11.5	-	4
G-3N.K/L-10X -M-3DK36 - H32	70	42	26	15	30	82	32	5.5	70	105	10	27	25	11.5	-	4
G-4N.K/L-10X -M-4DK30 - E18	80	42	27	15	30	94	32	5.5	71	107.5	10	26	25	11.5	-	4
G-4N.K/L-10X -M-4DK60 - F32	80	42	27	15	30	94	32	5.5	71	107.5	10	26	25	11.5	-	4
G-5N.K/L-10X -M-5DK40 - G18	90	60	40	18	36.5	104	32	7	94	124	12	27	25	13.5	-	4
G-5N.K/L-10X -M-5DK65 - E18	90	60	40	18	36.5	104	32	7	94	134	12	27	25	13.5	-	4
G-5N.K/L-10X -M-5DK70 - H32	90	60	40	18	36.5	104	32	7	94	124	12	27	25	13.5	-	4
G-5N.K/L-10X -M-5DK120 - F32	90	60	40	18	36.5	104	32	7	94	134	12	27	25	13.5	-	4

PEEMOGER COMPACT D C GEARED MOTORS

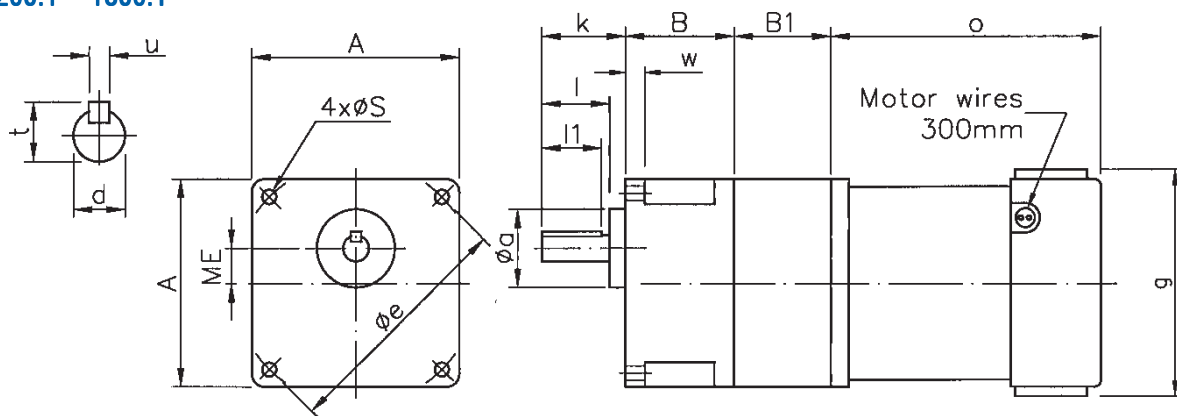
DIMENSIONS

G-5U RATIOS 3:1 - 180:1



Unit	Gearbox									DC Motors		Output Shaft				
	A	B	ME	a	e	k	s	w	g	o	dh7	l	l1	t	u	
G-5U.K - M-5.DK65 - E18	90	67	18	36	104	38	8.5	12	94	134	15	31	25	17	5	
G-5U.KH - M-5.DK65 - E18	90	87	18	36	104	45	8.5	12	94	134	18	38	30	20.5	6	
G-5U.K - M-5.DK100 - G18	90	67	18	36	104	38	8.5	12	94	160	15	31	25	17	5	
G-5U.KH - M-5.DK100 - G18	90	87	18	36	104	45	8.5	12	94	160	18	38	30	20.5	6	
G-5U.K - M-5.DK120 - F32	90	67	18	36	104	38	8.5	12	94	134	15	31	25	17	5	
G-5U.KH - M-5.DK120 - F32	90	87	18	36	104	45	8.5	12	94	134	18	38	30	20.5	6	
G-5U.K - M-5.DK200 - H36	90	67	18	36	104	38	8.5	12	94	160	15	31	25	17	5	
G-5U.KH - M-5.DK200 - H36	90	87	18	36	104	45	8.5	12	94	160	18	38	30	20.5	6	

G-5U RATIOS 200:1 - 1800:1



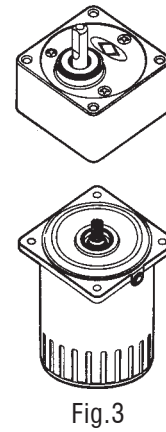
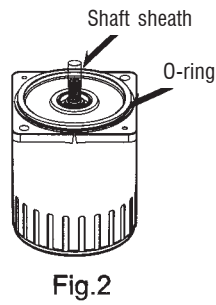
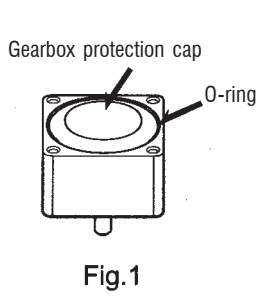
Unit	Gearbox											DC Motors		Output Shaft			
	A	B	B1	ME	a	e	k	s	w	g	o	dh7	l	l1	t	u	
G-5U.K-10X - M-5DK65 - E18	90	67	40	18	36	104	38	8.5	12	94	134	15	31	25	17	5	
G-5U.KH-10X - M-5DK65 - E18	90	87	40	18	36	104	45	8.5	12	94	134	18	38	30	20.5	6	
G-5U.K-10X - M-5DK100 - G18	90	67	40	18	36	104	38	8.5	12	94	160	15	31	25	17	5	
G-5U.KH-10X - M-5DK100 - G18	90	87	40	18	36	104	45	8.5	12	94	160	18	38	30	20.5	6	
G-5U.K-10X - M-5DK120 - F32	90	67	40	18	36	104	38	8.5	12	94	134	15	31	25	17	5	
G-5U.KH-10X - M-5DK120 - F32	90	87	40	18	36	104	45	8.5	12	94	134	18	38	30	20.5	6	
G-5U.K-10X - M-5DK200 - H36	90	67	40	18	36	104	38	8.5	12	94	160	15	31	25	17	5	
G-5U.KH-10X - M-5DK200 - H36	90	87	40	18	36	104	45	8.5	12	94	160	18	38	30	20.5	6	

PEEIMOGER COMPACT D C GEARED MOTORS

ASSEMBLY AND STORAGE

ASSEMBLY

1. Take off the gearbox protection cap and clean the grease off all the mating surfaces. (fig.1)
2. Take off the O-ring from the gearbox protection cap and fit to the motor spigot. (fig.2)
3. Turn the motor upwards and remove the shaft-sheath as fig.2.
4. Proper alignment and care is necessary when assembling gearhead with motor. (fig.3)
5. After assembling, please fasten the four bolts diagonally (fig.4). For bolt torque please refer to the table below.



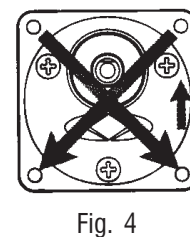
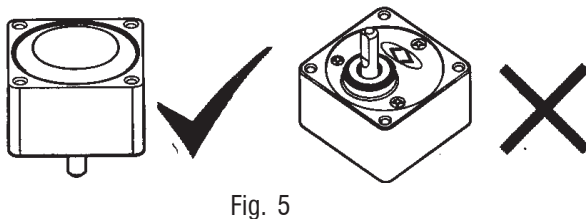
Frame Size	Bolt Size	Bolt Torque (kgfcm)	Bolt Torque (Nm)
60 mmsq	M4	20 kgfcm	2.0 Nm
70 mmsq	M5	25 kgfcm	2.5 Nm
80 mmsq	M5	25 kgfcm	2.5 Nm
90 mmsq	M6	30 kgfcm	3.0 Nm

STORAGE OF UNASSEMBLED UNITS

Keep the output shaft downwards when storing the gearhead (fig.5)

PLEASE NOTE

Improper assembly procedure may damage the motor and gearhead which will cause noise and diminish the lifetime.





**BROWN
EUROPE**

Revenge Road,
Lordswood Ind. Estate, Chatham,
Kent.
ME5 8UD.

Tel. (0044) 1634 687141

Fax. (0044) 1634 686347

Email. Mail@Brownroupltd.com